



High Waist Slim Body Formal Dress Fashion Gauze See Through Evening Dress Slim Fit

Our Product Introduction

for more products please visit us on stylishladydress.com

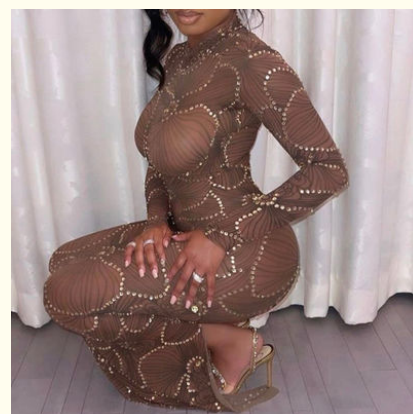
Basic Information

- Place of Origin: china
- Model Number: 9627
- Minimum Order Quantity: expand on
- Price: expand on

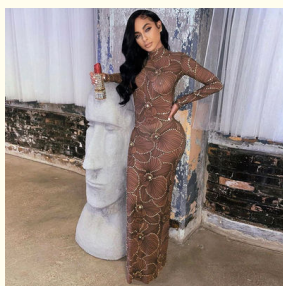


Product Specification

- Occasion: Evening
- Neckline: Round Collar
- Waistline: High Waist
- Pattern Type: Solid
- Embellishment: Embroidery
- Size: S, M, L
- Closure Type: Pullover
- Name: Slim Evening Dress
- Fashion Element: Grenadine
- Pattern Design: Trim Fit
- Highlight: **High Waist Slim Body Formal Dress ,
Slim Body Formal Dress Fashion Gauze ,
See Through Evening Dress Slim Fit**



More Images



Product Description

High waist slim-fit evening dress, fashion gauze see-through slim-fit round neck long-sleeved dress

Technical Parameters:

Name	Slim Evening Dress
Gender	Female
Neckline	round collar
Closure Type	Pullover
Color	Customizable
Season	Autumn/Winter
Length	maxi dress
Waistline	High Waist
Fashion Element	Falbala,sloping Shoulder,slit
Sleeve Length	Long Sleeve,sleeveless

Product Description:

For women who want to keep up with fashion trends, this slim-fit evening dress is the perfect match. With its customizable colors, stylish design, stylish falbala, sloping shoulders and slit trim, this dress is sure to make you stand out. It is available in sizes S, M and L, and features convenient pullover closures. Whether you are attending a formal evening or an informal gathering, this dress will make you look stylish and elegant.



Features:

Product Name: Slim Evening Dress

Waistline: High Waist

Season: Autumn/Winter

Neckline:round collar

Closure type: Pullover
Modern dress for women party wear
Women trending dress
Classy dresses for women

Applications:

A slim-fit evening gown is perfect for any elegant evening occasion. It has a slim-fitting silhouette and stylish traditional design, making it the perfect choice for today's trends. The mesh and embroidery design of this dress is both comfortable and fashionable. It is made of high quality fabrics and colors that are customizable, making it the perfect showcase for fashion-forward ladies. Luxury slim-fit evening gowns are the perfect choice for those looking for stylish and traditionally elegant evening gowns.

Customization:

Customize Your Slim Evening Dress

Show off your latest trends in fashion for ladies with this stylish Slim Evening Dress. Featuring trending fashion for ladies, this shirt dress style is perfect for any special event. Choose from S, M, or L sizes and select your desired features, such as a Falbala, sloping shoulder, slit, pullover closure, and embroidery embellishment. Place of Origin: China.

FAQ:

- Q:** Where is the Slim Evening Dress from?
A: The Slim Evening Dress is from China.
- Q:** What material is the Slim Evening Dress made of?
A: The Slim Evening Dress is made of Polyester.
- Q:** Are there different sizes available for the Slim Evening Dress?
A: Yes, the Slim Evening Dress come in multiple sizes.
- Q:** Is the Slim Evening Dress machine washable?
A: Yes, the Slim Evening Dress is machine washable.
- Q:** Does the Slim Evening Dress have any accessories?
A: The Slim Evening Dress comes with its own accessories.

VINAS DRESS Guangzhou Vinas clothing technology Co., LTD



15827133024



leopeng15827133024@gmail.com



stylishladydress.com

Building F, No. 3 Nanpu Nangui Road, Luopu Street, Panyu District, Guangzhou City